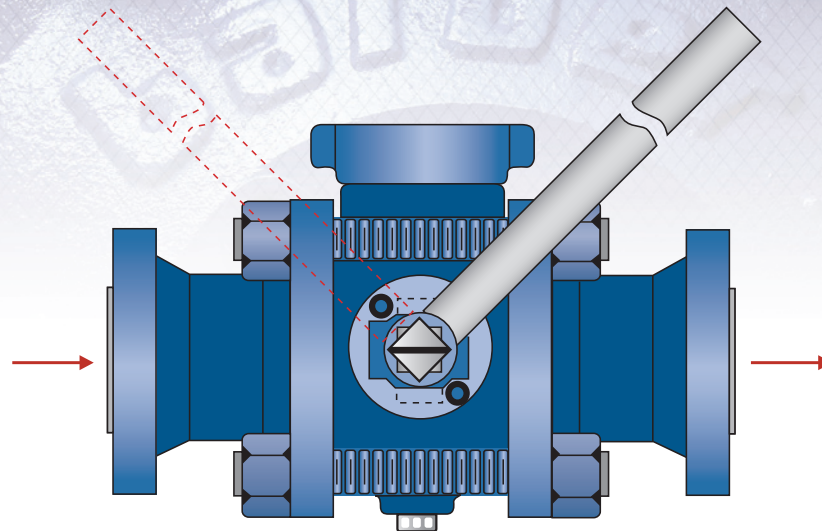


→ Model SSB 2" Pigging Valve

Installation Instructions Bulletin II2.1



Installation Instructions:

- 1 **Before Installing** the Pigging Valve, turn the operating stem so that the groove on the end of it is at right angles (perpendicular) to the flowline (valve closed position).
- 2 Remove the pig entry cap and look into the valve ball cavity to be certain that the stop frog is on the far side (Bottom) of the valve. (Note: There is no stop frog on pigging valves that are intended to send bullet pigs).
- 3 If the frog is not on the far side of the valve ball cavity, remove the positive stop plate from the stem and rotate the stem one-half a turn. Then install the stop plate back on the stem.
- 4 Locate the Pigging Valve, **for pig sending**, in the horizontal portion of the flowline near the wellhead if possible.
- 5 **For pig receiving** at the other end of the flowline, locate the pigging valve in a horizontal portion of the flowline if possible.
- 6 The pig entry cap and bleed valve should always be on the top to minimize product spillage when venting body pressure and inserting a pig. (The bleed valve should have a straight through 0.37" diameter flow pattern to provide rod-ability and to minimize plugging).
- 7 There is an additional bleed connection on the body, opposite the entry cap, that can be used to drain away body pressure.
- 8 When the Pigging Valve is being used as a sender, and the flow direction is from **left to right** as shown above, the positive stop plate should be positioned on the stem so that the valve is **open** when turned to the right (solid handle outline). The valve will then be **closed** when turned to the left (dotted handle outline).
- 9 When the Pigging Valve is being used as a **receiver**, and the flow direction is from **left to right** as shown above, the positive stop plate should be positioned on the stem so that the valve is **closed** when turned to the right (solid handle outline). The valve will then be **open** when turned to the left (dotted handle outline).
- 10 If the conditions are not being met (in 8 and 9), then remove the positive stop plate from the square stem and rotate it one-quarter of a turn (either direction) and install it back on the stem.

OPERATING INSTRUCTIONS:

CAUTION!! Pigging operations can be dangerous. Always proceed with care and perform each step one at a time.

Pig Ball Sending Procedure

- A. Close the valve (stem groove crosswise to flowline).
- B. Vent the body cavity pressure.
- C. Carefully remove the side entry cap.
- D. Insert the pig ball into valve ball cavity.
- E. Install the side entry cap.
- F. Open the valve (stem groove in line with flowline).

Pig Ball Receiving Procedure:

Same procedure as sending except to change item "D" to instruct as follows:

- D. Remove the pig from the valve ball cavity.

Bullet Pig Sending Procedure:

Use the same procedure as for sending pig balls but use only the pigging valves without a stop frog in the valve ball. (Note: The Pigging valve cannot be used for **receiving** bullet pigs).

➔ **Model SSH 2" Pigging Valve**

2" Pigging Valve Dimensions (fig. 1.1)

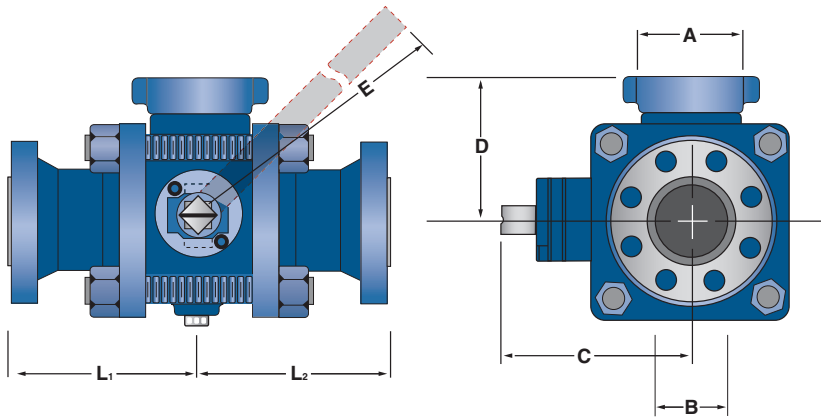


Fig 1.1

CONNECTIONS	LENGTH (INCHES)		WEIGHT
	L ₁ = L ₂	L ₁ + L ₂	
(A.N.S.I.)			lbs.
300 RF	7.12	14.25	95
300 RTJ	7.25	14.50	100
600 RF	7.12	14.25	100
600 RTJ	7.31	14.62	105
900 RF	7.25	14.50	110
900 RTJ	7.31	14.62	115
2" N.P.T.	5.25	10.50	80
A	Side Entry: Ball Core Bore		2.50"
B	Minimum Through Bore		2.06"
C	Stem Height		6.20"
D	Side Entry Cap Height		5.5"
E	Operating Handle		22.00"

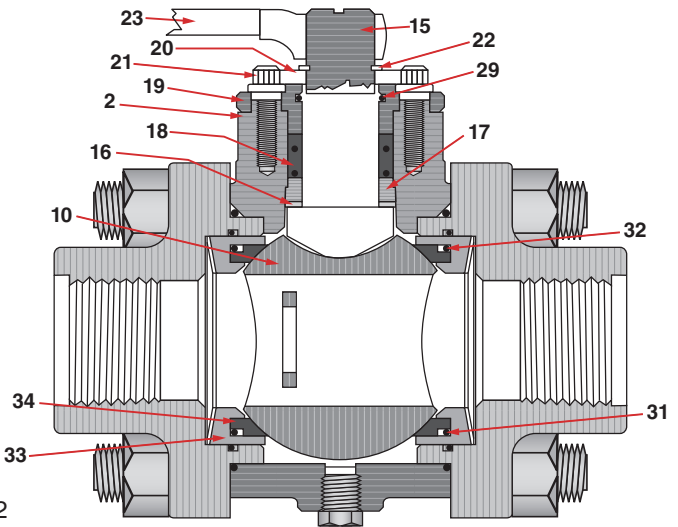
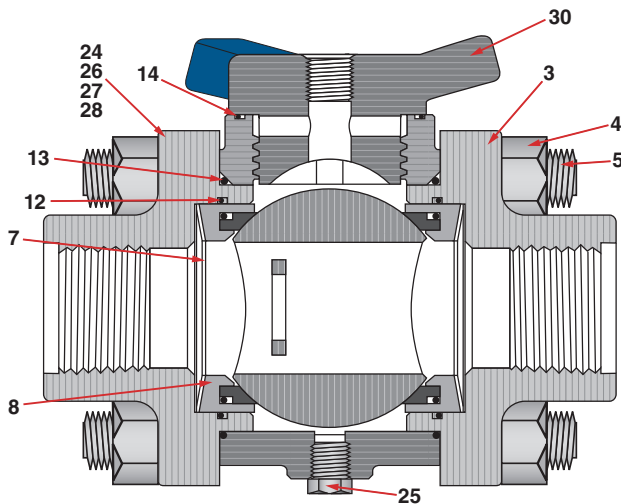


Fig 1.2

2" Pigging Valve Parts List (fig. 1.2)

ITEM NO.	PART NUMBER	NO. REQ'D.	DESCRIPTION	ITEM NO.	PART NUMBER	NO. REQ'D.	DESCRIPTION
00	10000026	1	2" PIG BALL VALVE 300# RF	16	10100145	1	THRUST BEARING
00	10000029	1	2" PIG BALL VALVE 600# RF	17	10100146	1	STEM RING
00	10000030	1	2" PIG BALL VALVE 600# RTJ	18	74000008	2	STEM SEAL POLYPAK
00	10000028	1	2" PIG BALL VALVE 900# RF	19	10100147	1	GLAND RING
00	10000027	1	2" PIG BALL VALVE 900# RTJ	20	10100148	1	INDICATOR/TRAVEL STOP
00	10000025	1	2" PIG BALL VALVE 600/900# NPT	21	70000039	2	FERRY CAP COUNTER BOR SCREW 1/2" N.C. X 1" LG.
02	10100133	1	BODY HOUSING	22	72000006	1	SNAP RING
03	10100135	2	TAIL PIECE - THR'D	23	10100149	1	OPERATING HANDLE
04	70000079	8	NUT 1"	24	10100154	2	TAIL PIECE ASS'Y 900# RTJ
05	70000038	4	STUD 1"	25	77000012	2	PIPE PLUG 1/2" NPT
06	10100137	2	SPRING SPACER	26	10100159	2	TAIL PIECE ASS'Y 600# RTJ
07	75000016	2	BELLEVILLE SPRING	27	10100156	2	TAIL PIECE ASS'Y 900# RF
08	10110007	2	SEAT SUB ASS'Y	28	10100157	2	TAIL PIECE ASS'Y 600# RF
10	10100140	1	BALL SUB ASS'Y	29	71000029	1	MOISTURE & DIRT EXCLUDER "O" RING SEAL
11	10100152	2	TAIL PIECE ASS'Y 300# RF	30	10100150	1	SIDE ENTRY CAP
12	71000026	2	SEAT "O" RING SEAL	31	71010008	2	SEAT INSERT "O" RING
13	71000027	2	BODY SEAL	32	71010009	2	SEAT INSERT BACKUP RING
14	71000028	1	ENTRY CAP "O" RING SEAL	33	10110008	2	SEAT CARRIER
15	10100144	1	OPERATING STEM	34	10110009	2	SEAT INSERT