



Reducing Downtime... Revolutionizing Flow.

King's Energy Services Ltd. is excited to announce the long awaited release of the FLO-KING ball valve. Exclusively manufactured & distributed by King's Energy the FLO-KING valve addresses the age old problem of inline repairability with a new and innovative design thus REDUCING DOWNTIME... REVOLUTIONIZING FLOW!

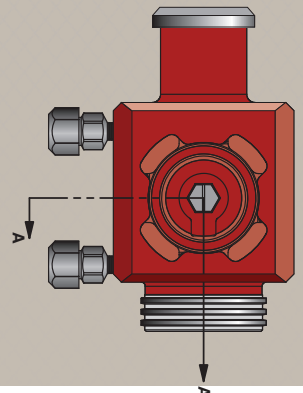
The FLO-KING valve is the only valve that offers patent pending top entry designed breach lock bonnet which allows for ease of maintenance and complete trim changes in minutes. The top entry design gives you the opportunity to visually inspect the valve, no special tools required, no need to break the integrity of the pipeline, and no need for extra expensive manpower for valve removal. When the FLO-KING is installed that is where it STAYS!

The FLO-KING design incorporates a rugged hardened metal to metal seat design with a sealant energizing system to tackle the most corrosive & abrasive services with a leak tight seal. The valve also includes a double block and bleed to prove the sealing ability and a trunnion mounted ball

which gives it the lowest operating torques in its pressure class. FLO-KING comes in standard ANSI/API connections for current replacement applications, but can also be custom built for specialty applications.

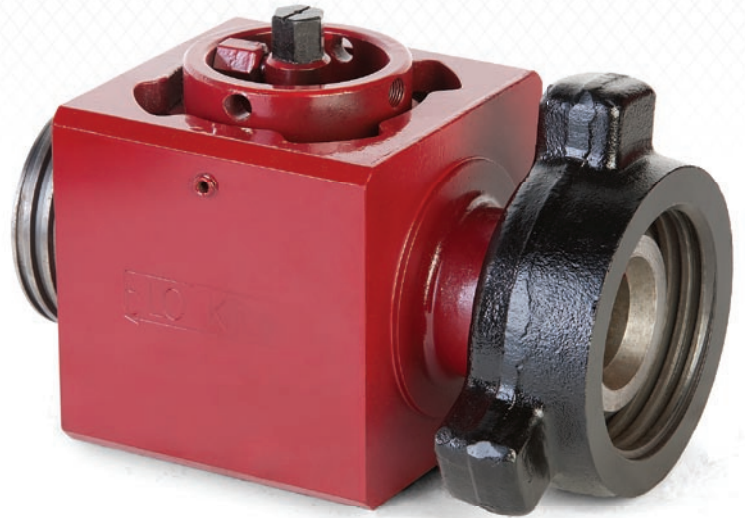
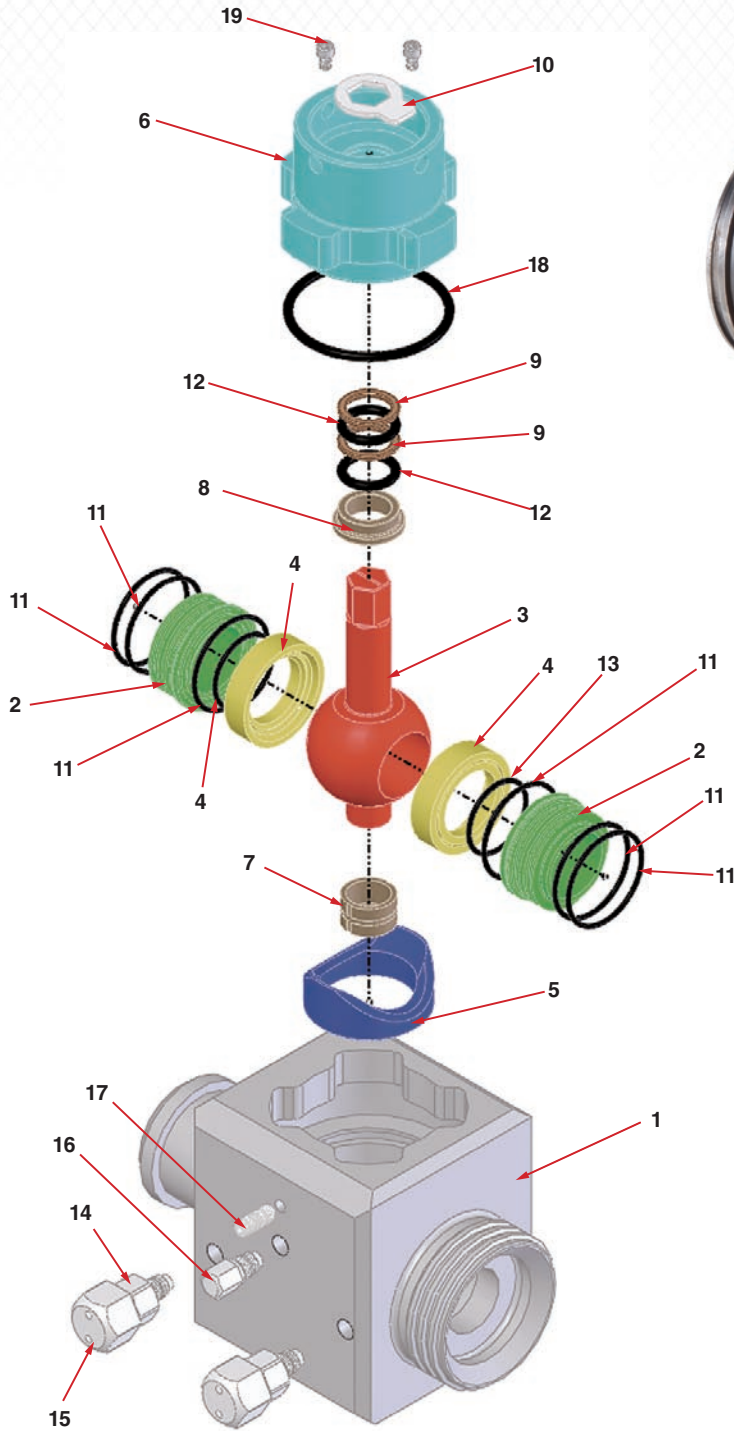
Features

- Breach Lock Cap design
- MR-01-75 compliant
- Rated to -50°C
- Body & Seat sealant fittings
- Hardened Seat Materials
- 2" – 8" Full Port Design Sizes
- Complete Repair Kits Available
- API, NPT & Flanged





Reducing Downtime, Revolutionizing Flow.



Flo-King Parts List (fig. 1.1)

Item No.	Description	QTY.
1	Valve Body	1
2	Seat Support Plate	2
3	Ball	1
4	Seat	2
5	Seat Anti-Rotation Ring	1
6	Cap	1
7	Trunnions Bushing	1
8	Stem Bearing	1
9	Gland Washer	2
10	Ball Stop Plate	1
11	O-Ring Seal	6
12	O-Ring Seal	2
13	O-Ring Seal	2
14	Sealant Fitting	2
15	Sealant Fitting Caps	2
16	Body Bleed Fitting	1
17	Bonnet Lock Screw	1
18	Bonnet O-Ring Seal	1
19	Bonnet Lock Pins	2

Fig 1.1

Phone: (403) 343-2822
 Toll Free: 1-866-660-KING
 Fax: (403) 347-1470
 www.kingsenergy.com

277, 28042 Highway 11
 Red Deer County
 Alberta T4S 2L4

Manufactured By:  **King's**
 ENERGY SERVICES LTD