



PROVIDING SOLUTIONS

Valves, Electrical, Instrumentation & Measurement

Red Deer | Provost | Drayton Valley | Grande Prairie | Dawson Creek | Cambridge

QUALITY PRODUCTS

Pressure Relief Valve Services & ANSI/API Services

- Complete recertification with On-Line tracking
- Sec I, IV, VIII
- Steam testing up to 3000psi
- Full turnaround services
- Full Machine shop /w Inline Grinding

On-Site Pressure Relief Valve & ANSI/API Services

- Complete Recertification
- up to 14" & 3000 psi
- Full Turnaround Services
- Certified BC, AB, SK & ON
- In-line certification - ALD

Additional Valve Field Services

- In-situ all terrain vehicle remote valve servicing
- Side entry well head valve servicing
- Lubricant & sealant servicing
- Gate clamp well head bonnet servicing
- Picker servicing

Custom Manufacturing

- Construct, repair, & alter ASME B31.1 power piping & ASME B31.3 process piping
- Manufacture, repair & alter category A, B, C, D, E, F & H fittings in accordance with CSA B51
- ASME Section VIII, Division 1, pressure vessels



API Q1 | API 6D | ISO 9001:2015 | AQP-1536 | TSSA QA 05696 | ASVS-50

QUALITY SERVICES

VALVE PRODUCTS

Relief Valves | TAYLOR VALVE TECHNOLOGY

- The Original Self-Aligning Seat Technology™
- Industry leading capacities
- ASME certified in accordance to Sec VIII Div I. for air/gas and liquid service
- Pressure range up to 10,000 psi
- C to M Orifice



Relief Valves PRODUCT SERIES

8250 Relief Valve
8400 LP Relief Valve
9300 Pilot Valve

Bronze Relief Valves | KINGSTON

- Suitable for use with air, gas, liquid, and steam
- Section I and VIII
- Sizes 1/2" to 3"

Brass | Carbon Steel | Stainless Steel



Rupture Pin Valves | Rupture Pin Technology

- Custom and Standard safety pressure relief and isolation valves
- Extreme accuracy (+/- 5 %)
- Better performance and reduced downtime
- Patented pin technology
- Facilities, pipeline, wellhead applications
- Successfully used in various industries including Oil & Gas, and Water Treatment
- Available in various sizes from 1/8" to 48" in diameter



Back Pressure Valves | TAYLOR VALVE TECHNOLOGY

- Balanced design
- Available in flange or threaded
- Inline, tee, and cross configurations
- Suitable for liquid or gas service
- Engineered to API, ASME, and CSA code specifications
- CRN Certified

APPLICATIONS

- Pump bypass
- Pump relief
- Well hookups & closed loop systems



Choke Valves PRODUCT SERIES

R-SERIES
MDI/MDI
CA/CI
MC

Choke Valves | TAYLOR VALVE TECHNOLOGY

- Superior control function
- Engineered to API & ASME Code
- Custom fit options available
- Steam chokes
- Reliable, precise, unique design
- Top quality product manufacturing



QUALITY PRODUCTS

E I & M PRODUCTS

Regulators | **BelGAS** A DIVISION OF MARSH BELLOFRAM

- Over 40 years experience
- High and/or low pressure
- General purpose regulators
- Back pressure relief regulators
- Renowned for high quality
- Accurate and dependable
- Safe for use in critical applications
- Various materials available
- Air, natural gas, and liquid applications



Chemical Pumps | **MONKEY PUMPS**

- Multiple sizes ranging from 20 -1000 psig
- 316 ss Standard Materials
- Pneumatic, Gas Powered, or Electric
- Zero Emissions
- Variable pump applications

Gauges | **MB MARSH BELLOFRAM**

- General Service Gauges
- Severe Service Gauges
- Precision Service Gauges
- Process Gauges
- Diaphragm Gauges
- HVAC/R Pressure Gauges
- Special Application Gauges



Flow Computers | **Dynamic** FLOW COMPUTERS

- 25 years' experience in flow computer manufacturing and design
- Custody transfer and measurement
- Ease of use
- Single screen graphical diagnostic
- Interactive DYNACOM configuration software
- Smart cone flow measurement
- DynaCone X - Wet Gas Meter



Electric Actuators | **VALVEON**

- Electric Actuators
- On-off duty
- Proportional control
- Two-wire network operation
- Class 1, Div 1
- Low Power options



Electric Actuators PRODUCT SERIES

V-Series Actuator
ADC Actuator
LC Actuator
Q-Series
I Series

Sight Glass | **RAYOTEK** scientific inc

- Direct, real-time views into high and ultra-high pressure vessels and other hazardous environments
- Direct visual observation of fluids, hydrate plugs and obstructions
- Tek-Glass Fused Glass is mechanically pre-stressed, used to eliminate cracking based failures and unexpected ruptures
- ISO 9001:2008
- CRN Registered



QUALITY PEOPLE

E I & M PRODUCTS

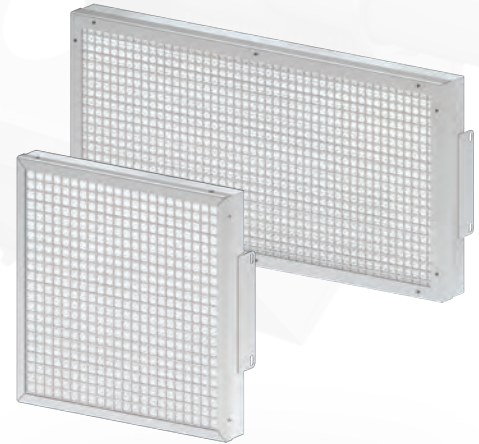
Valves & Manifolds | **schneider** Tailored to Your Business

- Founded in 1875
- Leading manufacturer of instrumentation valves and manifolds
- Appropriate for Oil and Gas, Petrochemical, Offshore, Pipeline transmission, Natural Gas Production, Pulp and Paper, Steel, and Nuclear Power Plants.
- TUV SUD and ISO 9001:2008 certified
- CRN Registered
- Control valves, monoflanges, manifolds, double block and bleed, & sampling probes



Catalytic Heaters | **CATCO** CATALYTIC HEATER COMPANY

- -Radiant Infrared Heating solutions
- Ideal for hazardous environments
- Highly efficient, Low cost
- Enclosure Packages for direct mount
- Area space heaters
- Wide variety of sizes



Sure Shot® Orifice Fittings |

- Sure Shot Dual Chamber 2" to 16"
- Sure Shot Single Chamber 2" - 6"
- Eccentric Isolating Plug Valve with Removable End Caps
- SureLock Safety Device and Lockout/Tagout
- 20°F to 275°F (-2°C to 135°C)
- UpStream, MidStream, Downstream applications

Gas Meters & Regulators | **elster**

* EXCLUSIVELY SOLD IN ONTARIO

- High/Low pressure applications
- Suitable for several industries including industrial, commercial, utilities & Oil & Gas
- Reliable, dependable, top quality
- Gas measurement
- Pressure regulation
- Testing systems
- Turbine gas meters
- Rotary gas meters
- Diaphragm meters
- Pilot - loaded regulators
- CSA Certified



Regulators | **MAXITROL**

* EXCLUSIVELY SOLD IN ONTARIO

- Low pressure applications such as residential, gas - fired appliances, commercial, equipment used on low or medium pressure gas supplies
- Available in various materials including aluminum and cast iron
- Suitable for natural, manufactured, mixed gases, liquefied petroleum gases, and LP gas-air mixtures
- CSA Certified
- For vent-less applications
- Suitable for pilot flow applications



QUALITY SERVICE

MANUFACTURED PRODUCTS

Gas Flare Measurement

Focus[®] 2.0 Optical Gas Flow Meter

- Gas flow measurement for flare and vent gas applications
- Simple installation, ease of use, and low maintenance
- High turn - down ratio of 1500:1
- ASME Code Section VIII, Division 1 Compliant and CSA Certified
- Accuracy +/- 2.5%
- Top of the line, patented laser technology



ESD Valves |



- Hi/Low Emergency shutdown valve
- Fail - safe
- Direct, remote or pilot controlled
- Manual, semi - automated, and fully automated options available
- No Hydraulic, Pneumatic, or Electrics required
- Standard low temperature sour trim
- Acceptable for use on oil well flow lines, gas lines, hydraulic lines, or where there are high and low pressure limits



7600 Liquid Relief



- Designed for over-pressure protection for vessels, pumps, flow lines, and other applications
- Available in aluminum - bronze or 316ss
- CRN Certified
- Pressure range up to 8,000 PSI



Pigging Valves



- Simple, safe, and convenient to insert and remove flow line pigs
- Eliminates excessive equipment and reduces the number of operations
- Sender/Receiver
- Sizes 3" - 8", custom sizes available



Ball Valves |



- Top entry ball valve with a patented breach - lock bonnet
- High Pressure and Highly abrasive applications.
- Ease of maintenance and trim changes
- Maintain system integrity
- Hardened metal to metal seat design
- Sealant energizing system
- MRO175 Compliant
- Low temperature rating to -50°C
- CRN Certified
- 2" - 8" Standard ANSI/API



PROVIDING SOLUTIONS

PROVIDING SOLUTIONS

E I & M Services

- Modular skid construction including e-house fabrication & process skids
- Industrial oilfield solutions: Centrifuge, Power distribution, Pump packages
- Greenfield & brownfield facility construction
- Control panel & junction box fabrication
- Electrical, instrumentation & measurement commissioning
- Project & construction management
- Design services
- Volumetric, bench & master liquid meter proving
- Predictive systems analysis & preventative maintenance
- Calibration & measurement
- Infrared thermography scanning & testing
- Combustion services
- Turnaround support
- Equipment rentals: Deadweights, Recorders, Gauges
- Automation services:
 - PLC, DCS, & HMI Programming
 - SCADA - host and site programming services
 - Electronic flow measurement - installation & calibration



OFM Installation | Construction | Maintenance | Plant/Field Services | Rentals

QUALITY PEOPLE



Divisions

Head Office

277 Burnt Park Drive
Red Deer County, AB
T4S 0K7
1-866-660-KING

Grande Prairie

713004 - Range Road 64
Grande Prairie, AB
T8V 5E5
1-780-538-2626

Drayton Valley

3205 -63rd Street
Drayton Valley, AB
T7A 1R8
1-780-515-9100

Provost

Box 187, 5020 - 50th Ave
Provost, AB
TOB 3S0
1-780-753-2136

Dawson Creek

612 - 103 Ave
Dawson Creek, AB
V1G 2E8
1-250-782-9713

Cambridge

#22, 225 Sheldon Drive
Cambridge, ON
N1T 1A1
1-519-455-1350



4fMAR032020