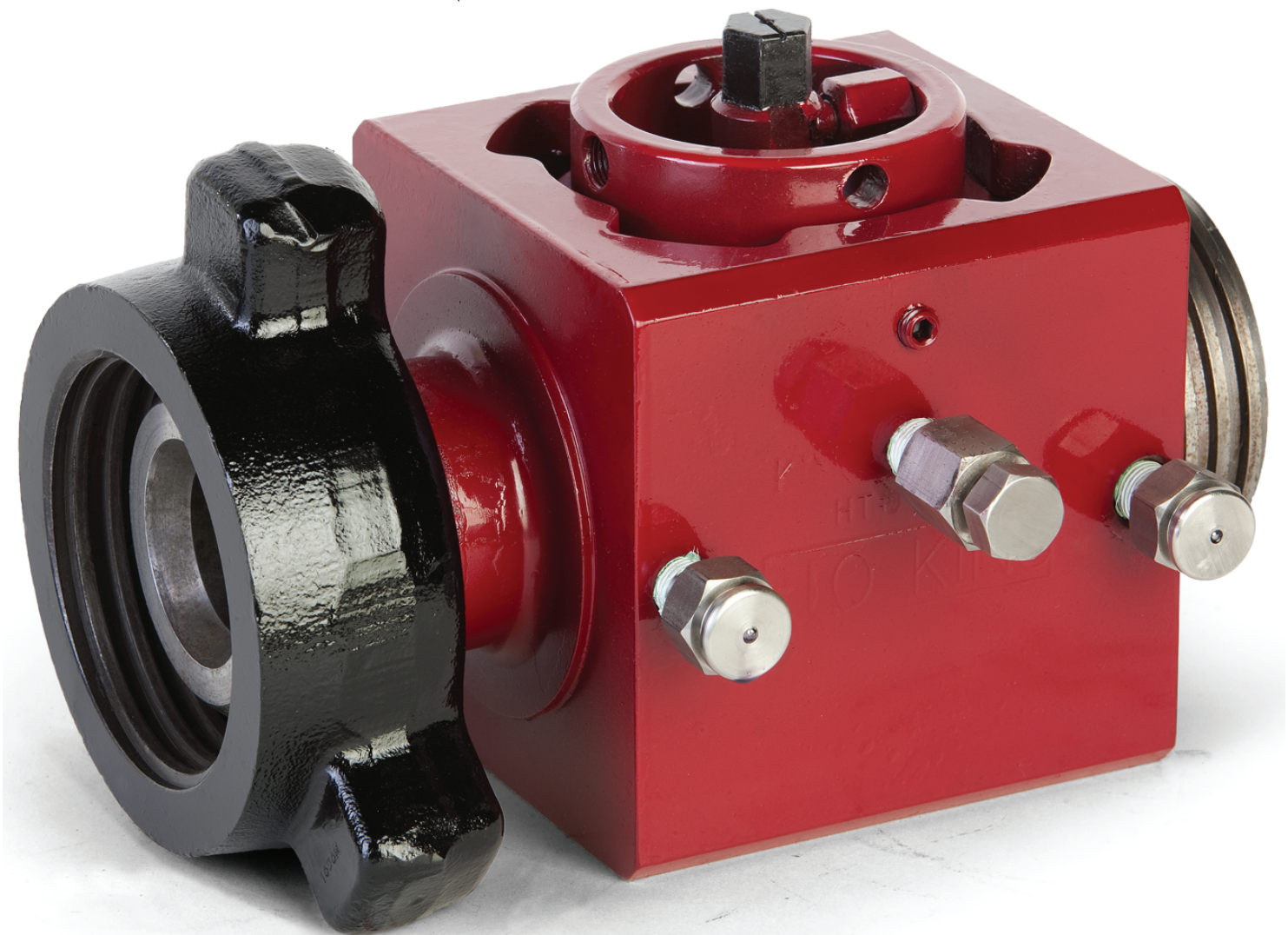




KINGS

ENERGY SERVICES



REDUCING DOWNTIME and REVOLUTIONIZING FLOW

The FLO-KING valve is the only valve that offers a patented top entry designed breach lock bonnet. The top entry design gives you the opportunity to inspect the valve without breaking the integrity of the flowline, no need for special tools, equipment, or additional support for valve removal. When the FLO-KING is installed that is where it STAYS!



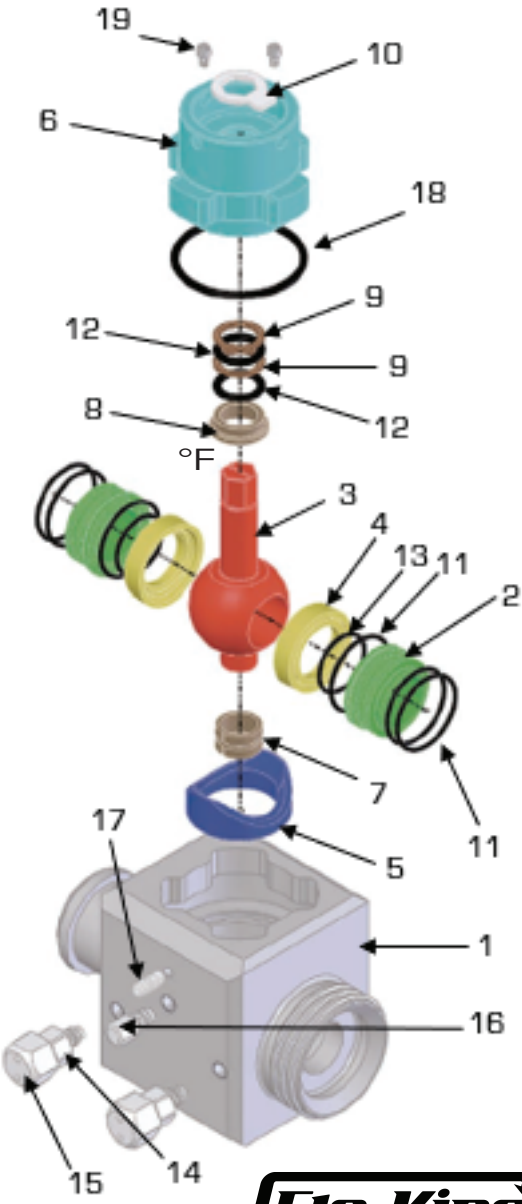
Features



- Breach Lock Cap Design
- MR-01-75 Compliant
- Full Temperature Rating
- Rated to -50°F to 250°F
- Integral Body Design
- Body & Seat Sealant Fittings
- Hardened Seat Materials
- 2"-8" Full Port Design Sizes
- Complete Repair Kits Available



Flo-King Parts List



Item No.	Description	QTY.	Item No.	Description	QTY.
1	Valve Body	1	11	O-Ring Seal	6
2	Seat Support Plate	2	12	O-Ring Seal	2
3	Ball	1	13	O-Ring Seal	2
4	Seat	2	14	Sealant Fitting	2
5	Seat Anti-Rotation Ring	1	15	Sealant Fitting Caps	2
6	Cap	1	16	Body Bleed Fitting	1
7	Trunnions Bushing	1	17	Bonnet Lock Screw	1
8	Stem Bearing	1	18	Bonnet O-Ring Seal	1
9	Gland Washer	2	19	Bonnet Lock Pins	2
10	Ball Stop Plate	1			

FLO-KING's enhanced designs:

- Seat sealant energizing system
- Double block and bleed
- Breach Lock Cap
- Exceedingly low operating torques
- Standard connections or customization size