



# KINGS

ENERGY SERVICES



## PREVENT FREEZING

- Maintain productivity
- Protect equipment
- Prevent downtime

## SAVE TIME & MONEY

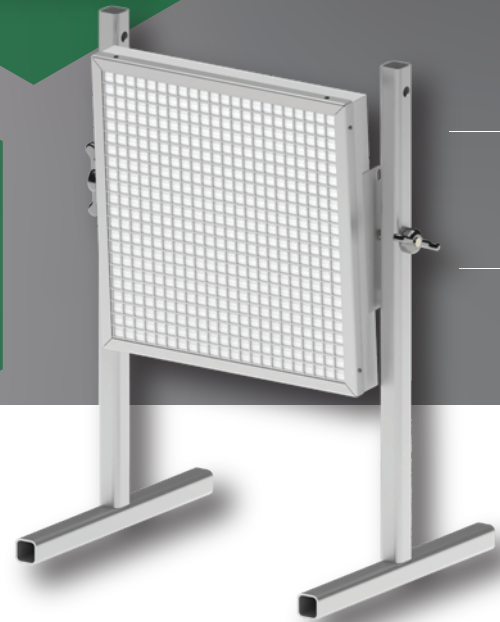
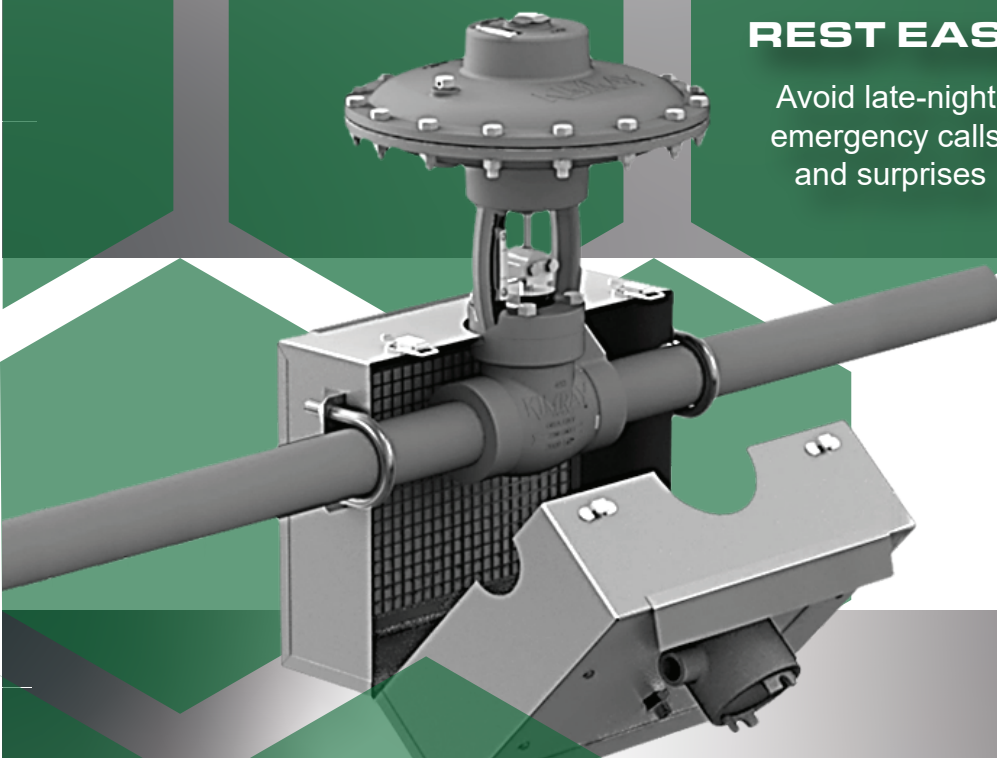
- Prevent the need for:
- Costly system repairs
  - Equipment replacement
  - Production delays

## MAINTAIN SAFETY

- Flameless heat
- Safe for use in hazardous environments

## REST EASY

Avoid late-night emergency calls and surprises



 **CATCO**  
CATALYTIC HEATER COMPANY

# SPACE HEATERS ENCLOSURES ACCESSORIES

[www.kingsenergy.com](http://www.kingsenergy.com)

# PROVIDING SOLUTIONS



- **EXPLOSION PROOF ENCASEMENTS**
- **GAS PRE-HEATING ASSEMBLIES**
- **CUSTOM SOLUTIONS**



## SPACE HEATERS

- Available in sizes ranging from 6" x 6" to 24" x 60"

## HEATED ENCLOSURES

- Available in various sizes to accommodate valves and/or regulators

## ACCESSORIES

- Mounts
- Thermostats
- Thermocouples



**CLASS 1, DIVISION 1 &  
DIVISION 2 HAZARDOUS  
ENVIRONMENT CERTIFIED**

[www.kingsenergy.com](http://www.kingsenergy.com)



277 BURNT PARK DRIVE,  
RED DEER COUNTY, AB  
T4S 0K7  
1-866-660-5464  
[info@kingsenergy.com](mailto:info@kingsenergy.com)